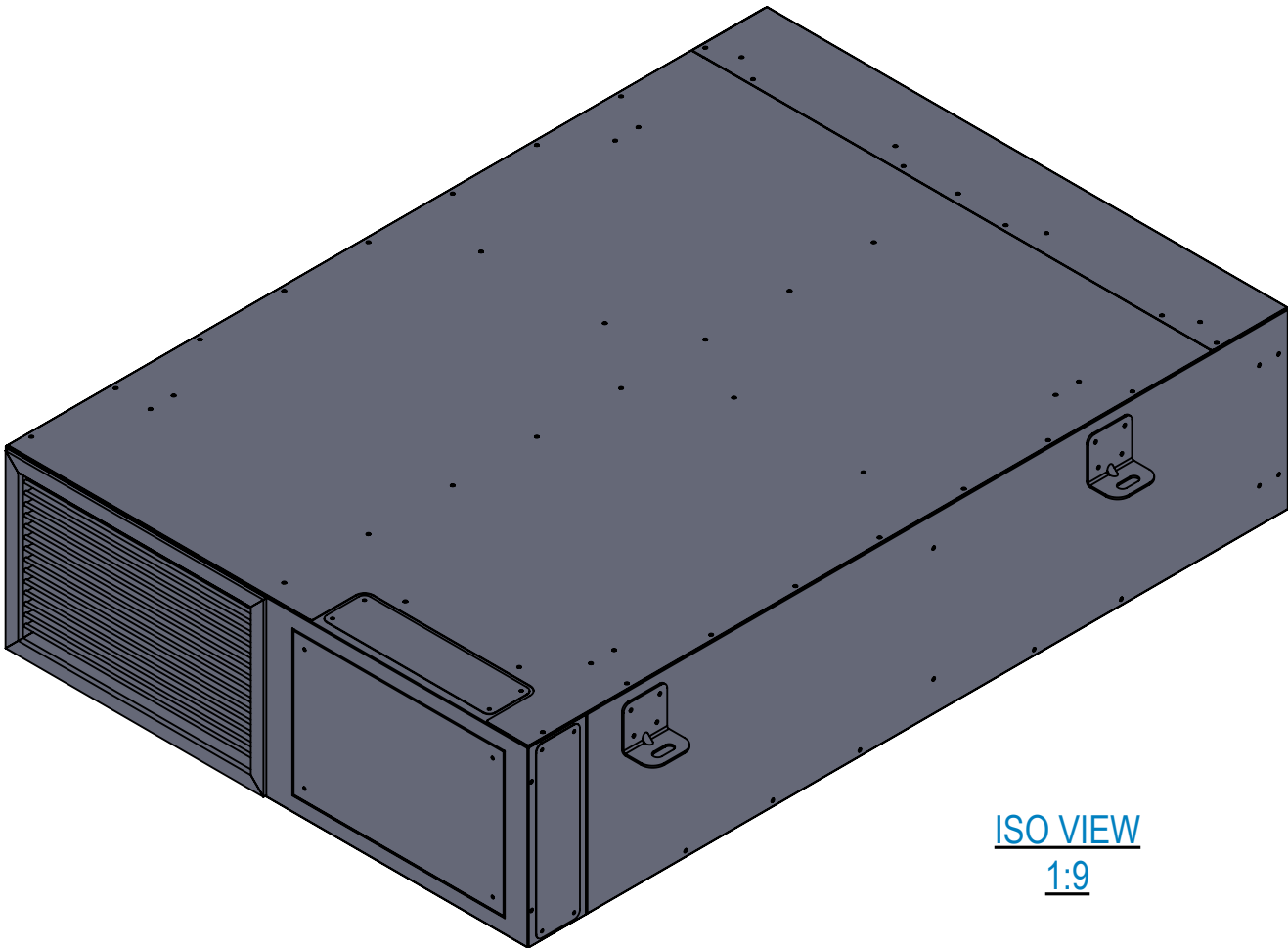
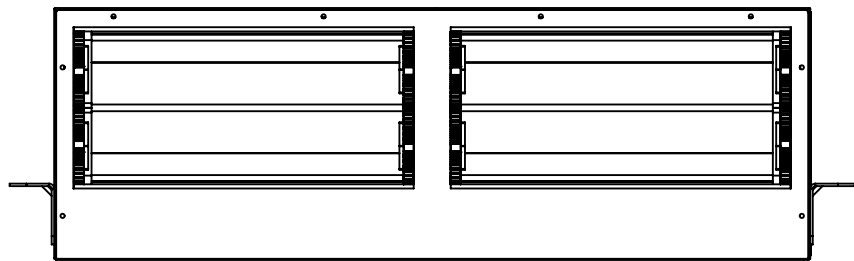
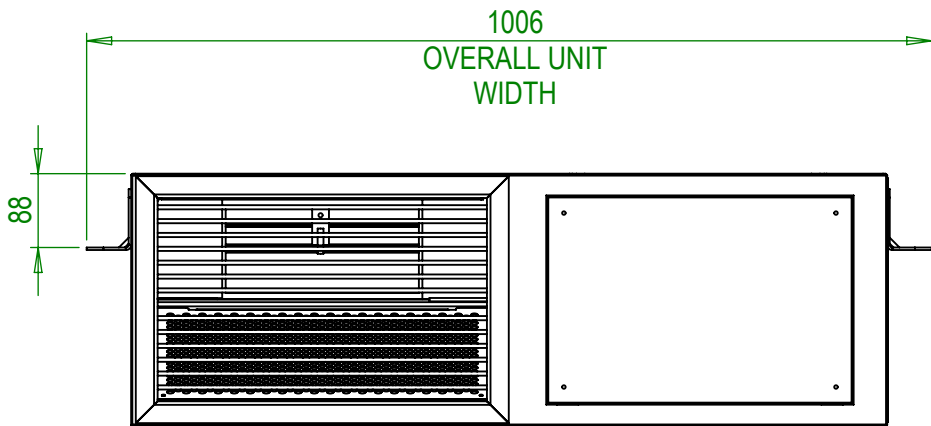
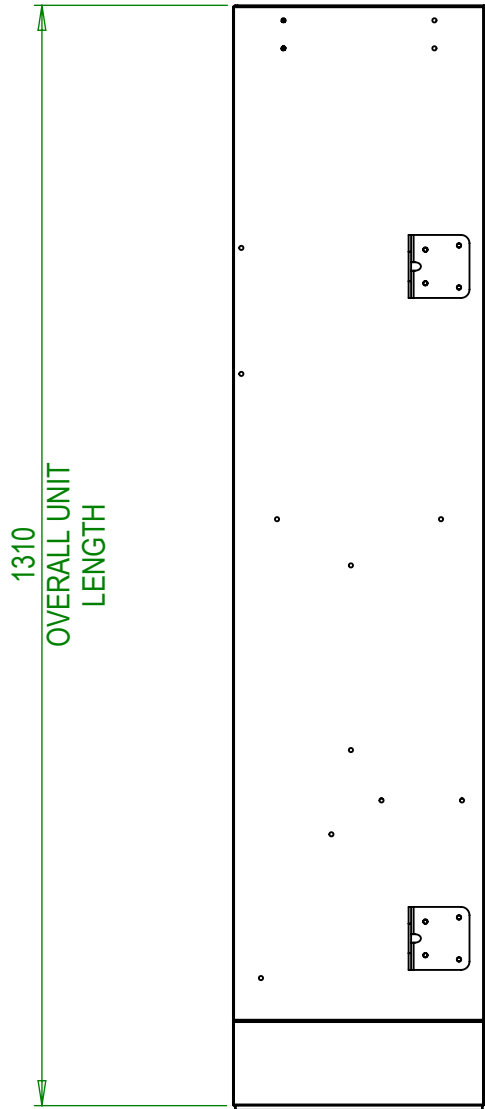
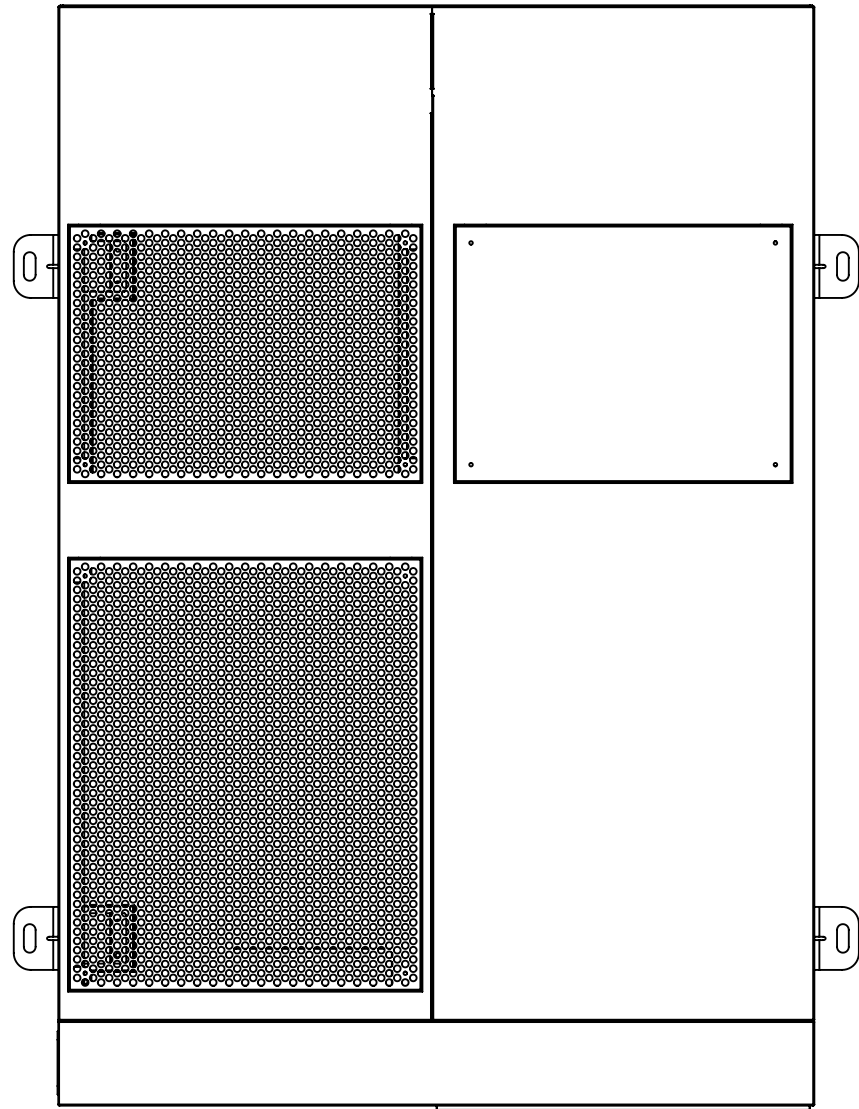
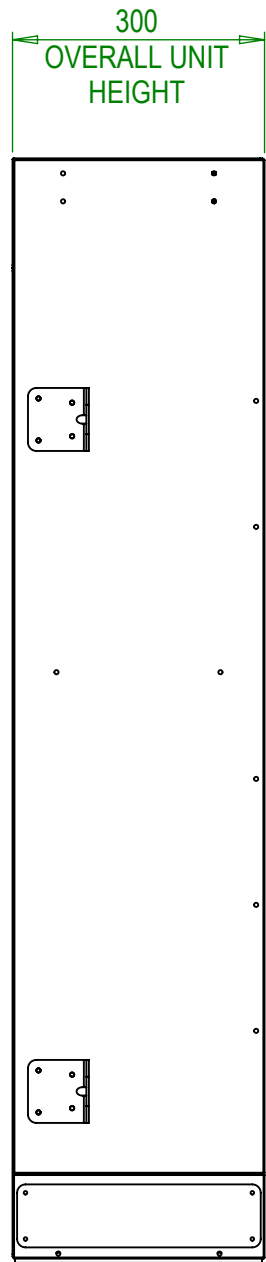
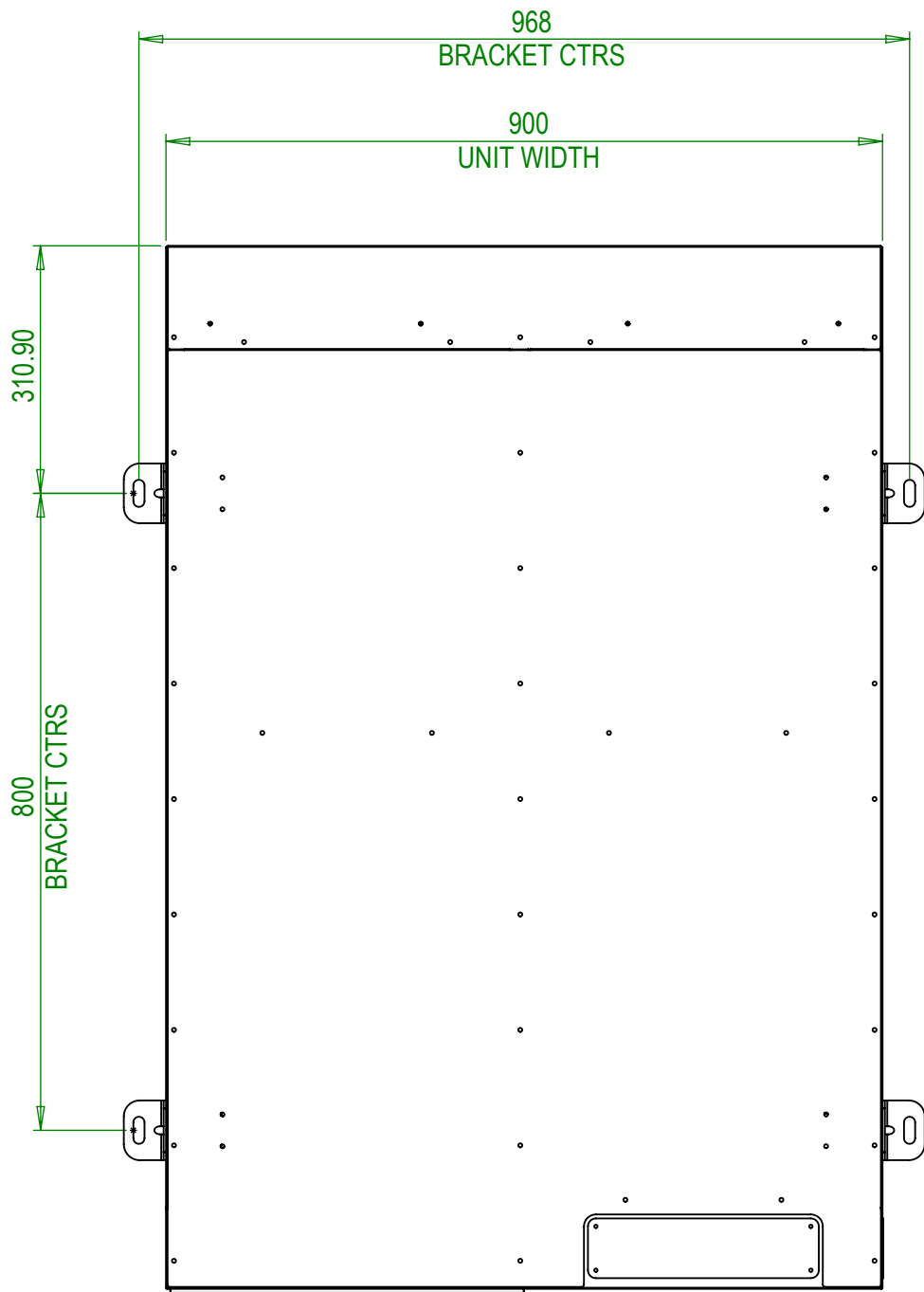


REFER TO SHEET 2 FOR DETAILS ON HOW TO INSTALL THE NVHR 900



ISO VIEW
1:9



DO NOT SCALE
IF IN DOUBT, ASK!

MATERIAL: COATED STEEL			
FINISH WHITE RAL 9003			
MASS WITHOUT PACKAGING NVHR 900 (1C) WITH GRILLE - 56KG			
TOLERANCES EXCEPT WHERE OTHERWISE STATED			
SIZE (mm)	X XX		TOLERANCE
over 0.5	up to 6		±0.1
over 6	up to 100		±0.2
over 100	up to 500		±0.5
over 500	up to 1000		±0.8
over 1000			±1.2

DE-BURR ALL SHARP EDGES AND HOLES
ITEM MUST BE FREE FROM SCRATCHES, DENTS AND
OTHER BLEMISHES.

DIMENSIONS IN MILLIMETRES



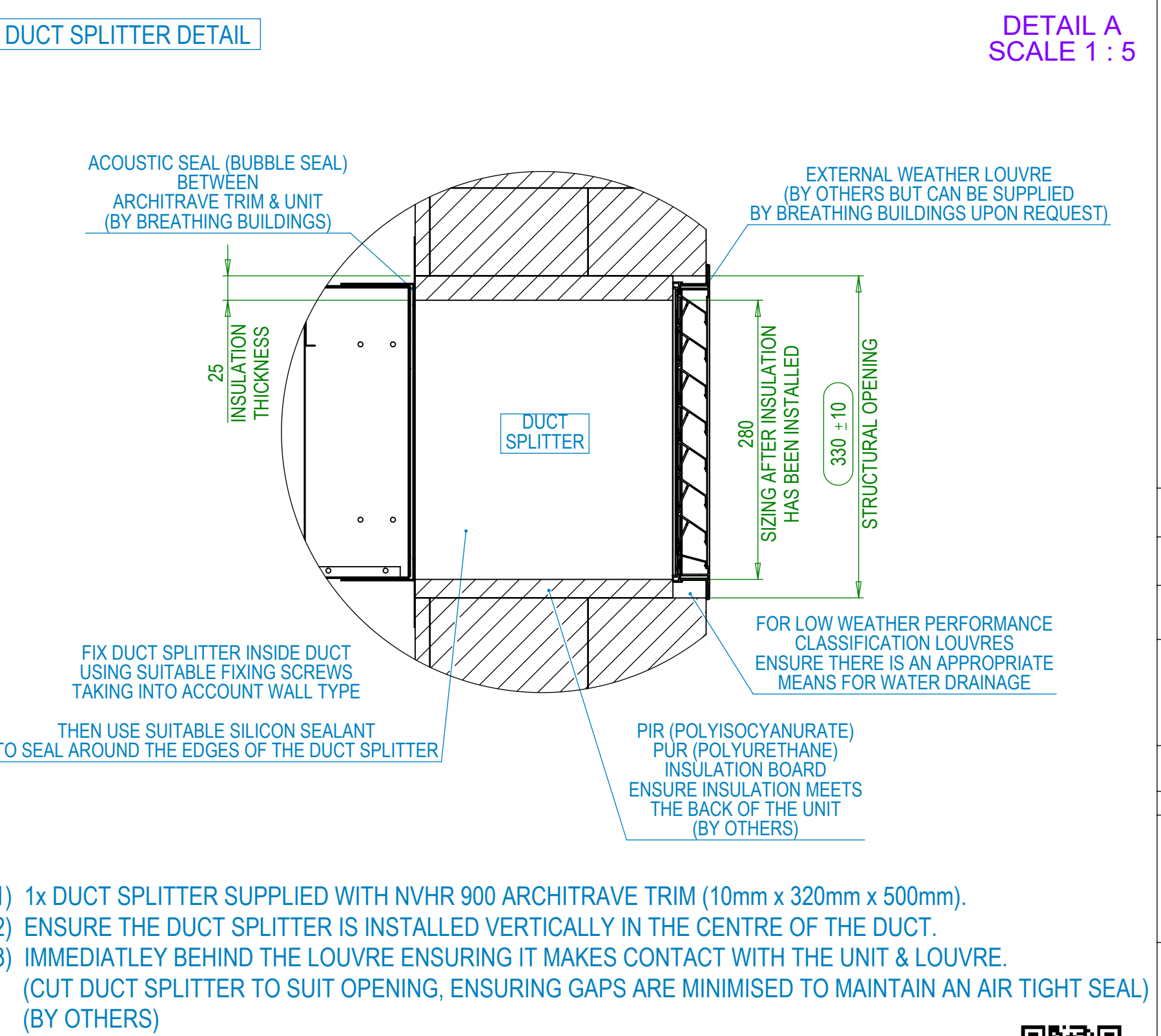
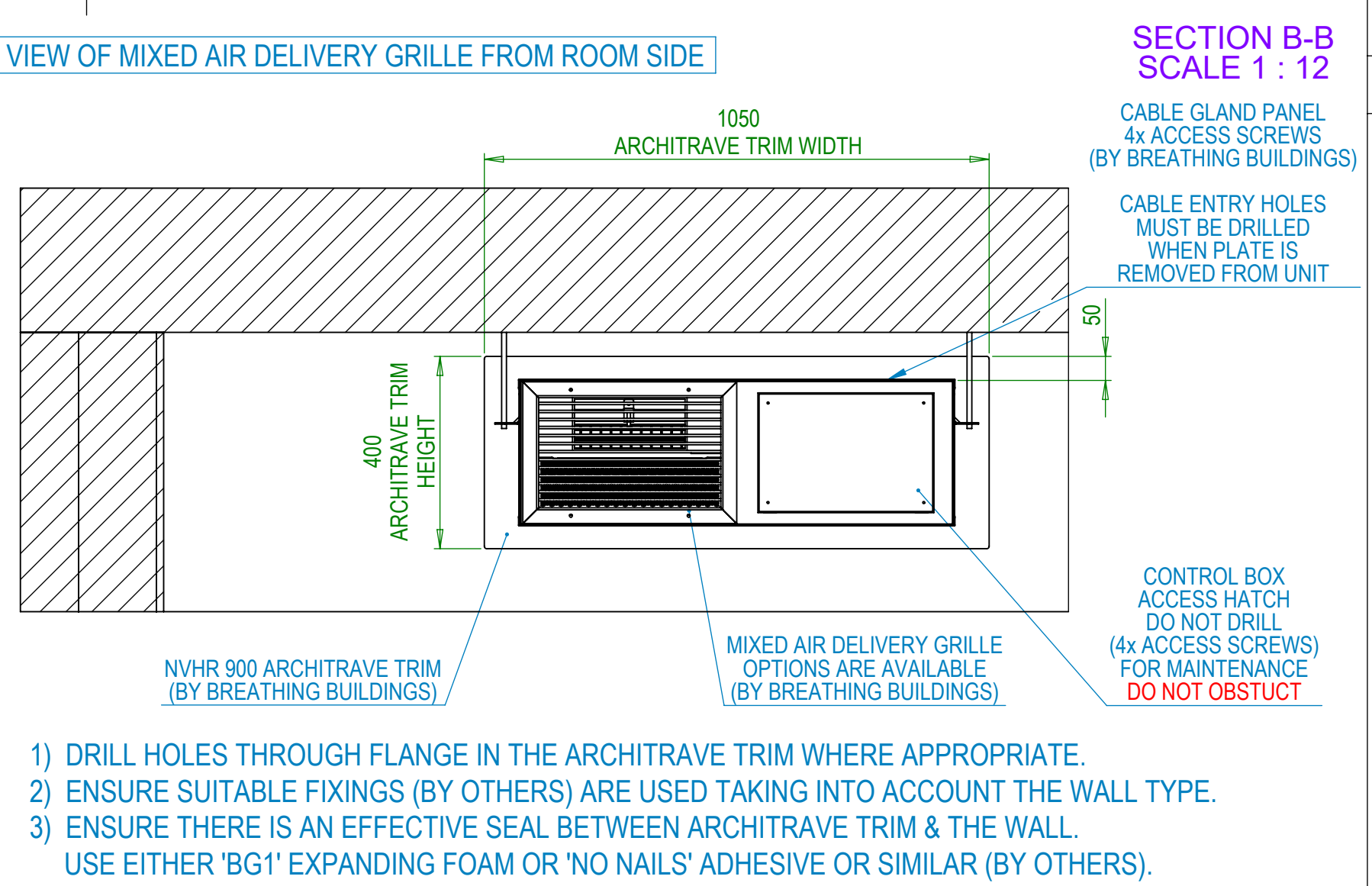
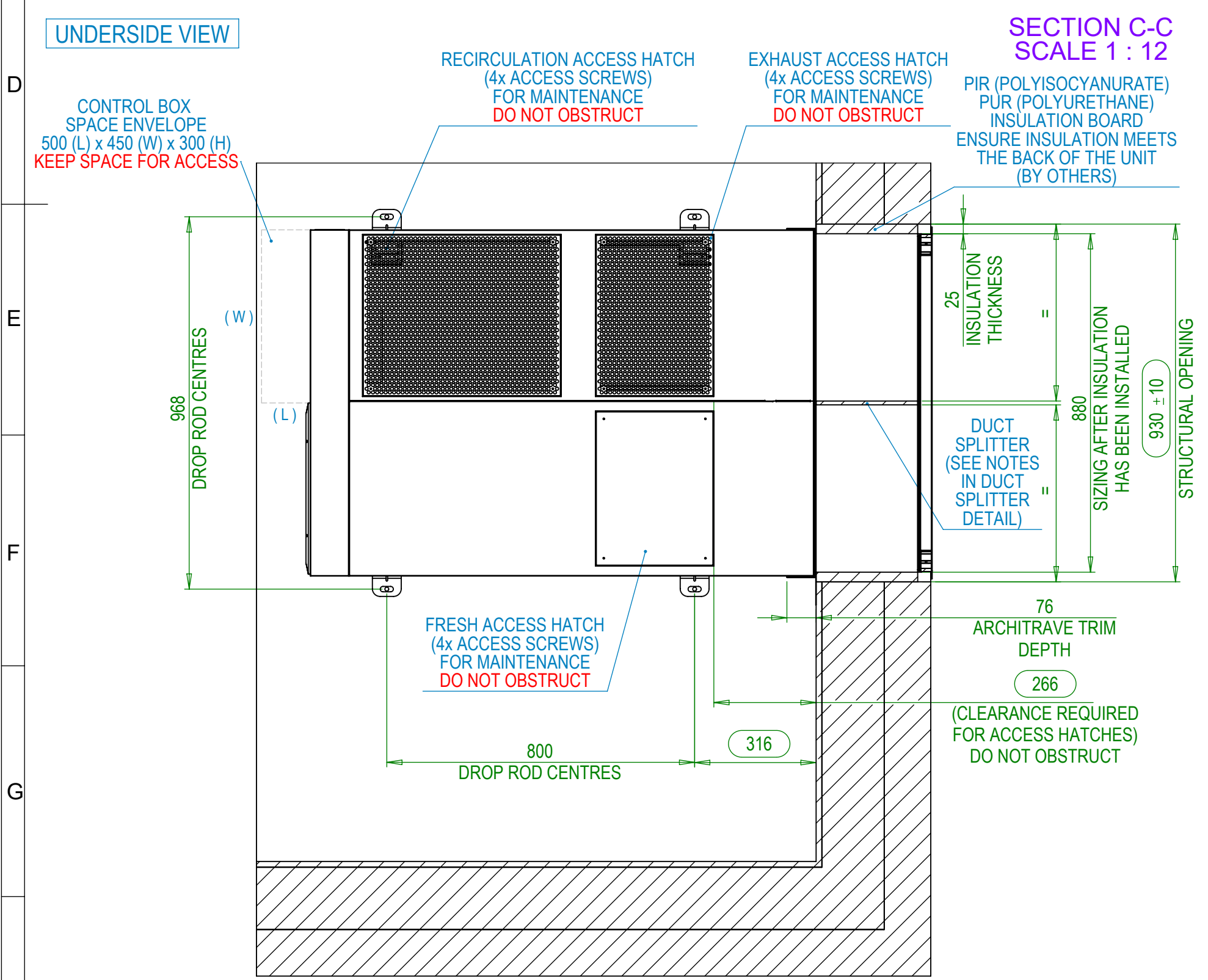
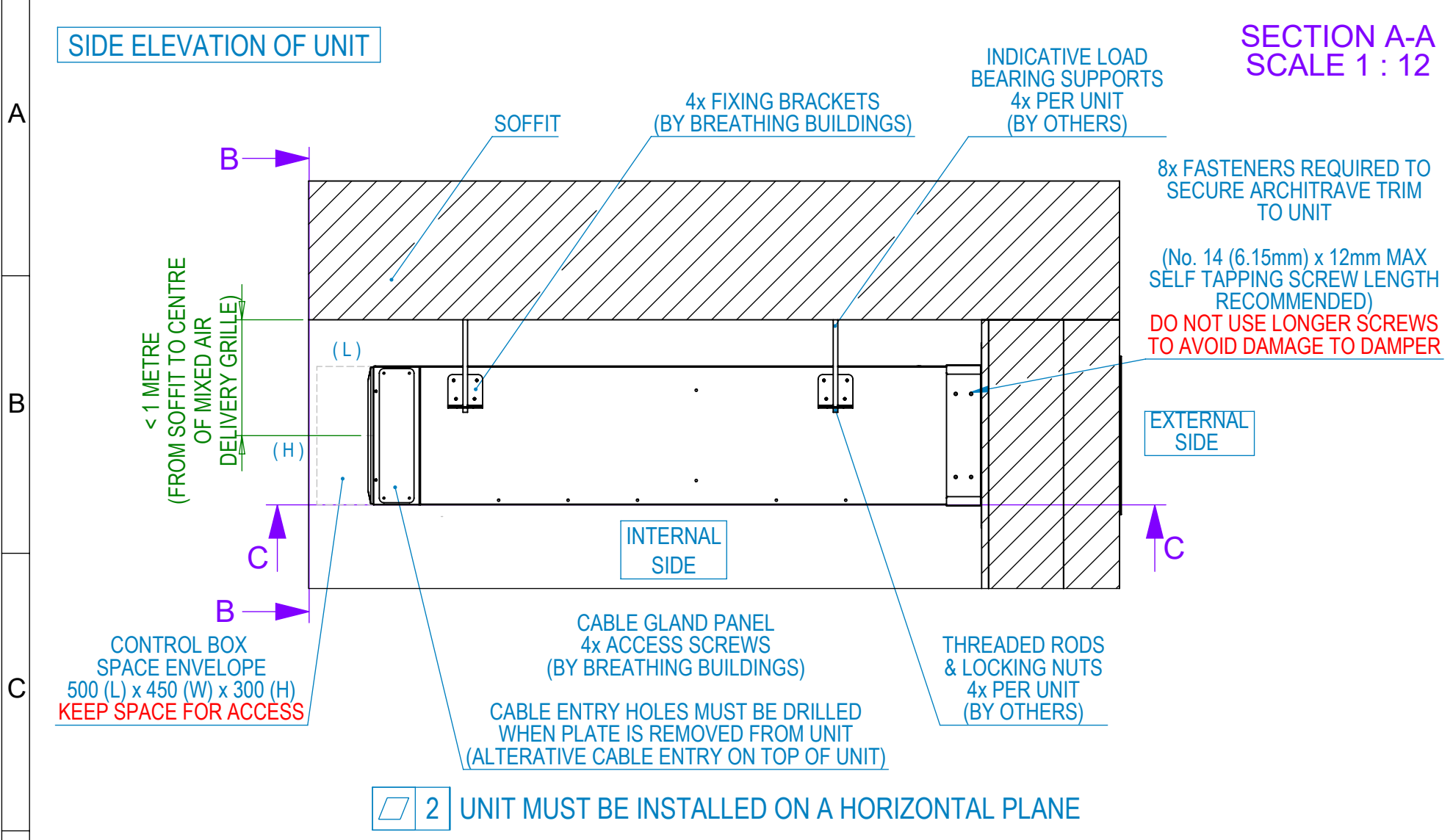
UNIT 3A, THE SHADE, SOHAM CB7 5HF
T: 01223 450060 F: 01223 450061
www.breathingbuildings.com/products

TITLE:
NVHR 900 (1C) - WITH GRILLE -
EXPOSED WALL INSTALLATION
DRAWING

DRAWING NO:
1809_9001

REV	DRAWN	DATE	CHK'D	DATE
5	MJW	03/04/2019	Not chkd	N/A

SCALE 1:9 A2 SHEET 1 OF 2



DO NOT SCALE				
IF IN DOUBT, ASK!				
NOTES:				
1) NVHR 900 (1C) WITH GRILLE SHOWN.				
2) ARCHITRAVE TRIM CAN BE CUT DOWN ON SITE IF REQUIRED (BY OTHERS)				
3) LOAD BEARING SUPPORTS MUST BE SIGNED OFF BY THE STUCTURAL ENGINEER.				
4) ENSURE PROTECTIVE PACKAGING IS LEFT ON WHILST THE UNIT IS BEING INSTALLED.				
5) PROTECTIVE PACKAGING TO BE REMOVED BEFORE COMMISSIONING (BY OTHERS)				