

**DO NOT SCALE**

**IF IN DOUBT, ASK!**

REVISIONS			
REV.	DESCRIPTION	DATE	DRAWN
1	FIRST ISSUE	02/08/2013	CC
2	DIMS	22/08/2013	CC
3	FIXING DETAIL	30/01/2014	CC
4	UPSTAND DETAIL	26/03/2014	CC
5	MINOR UPDATE	29/06/2015	CC
6	UPDATE WEIGHT	22/08/2016	CC

NOTES:

1. COMPATIBLE WITH R-SERIES E-STACK. DO NOT LIFT BY THE LOUVRE BLADES.

MATERIAL:  
ALUMINIUM

FINISH  
MILL (STD)

MASS WITHOUT PACKAGING  
180KG (TYPE A)

TOLERANCES EXCEPT WHERE OTHERWISE STATED

X	±	0.5MM
X.XX	±	0.05MM
ANGLES	±	0.5°

SURFACE TEXTURE TO BE 1.6 UMRA OR BETTER

DE-BURR ALL SHARP EDGES AND HOLES  
ITEM MUST BE FREE FROM SCRATCHES, DENTS AND OTHER BLEMISHES.

DIMENSIONS IN MILLIMETRES



UNIT 3A, THE SHADE, SOHAM, CB7 5HF  
T: 01223 450060 F: 01223 450061  
www.breathingbuildings.com/products

TITLE:

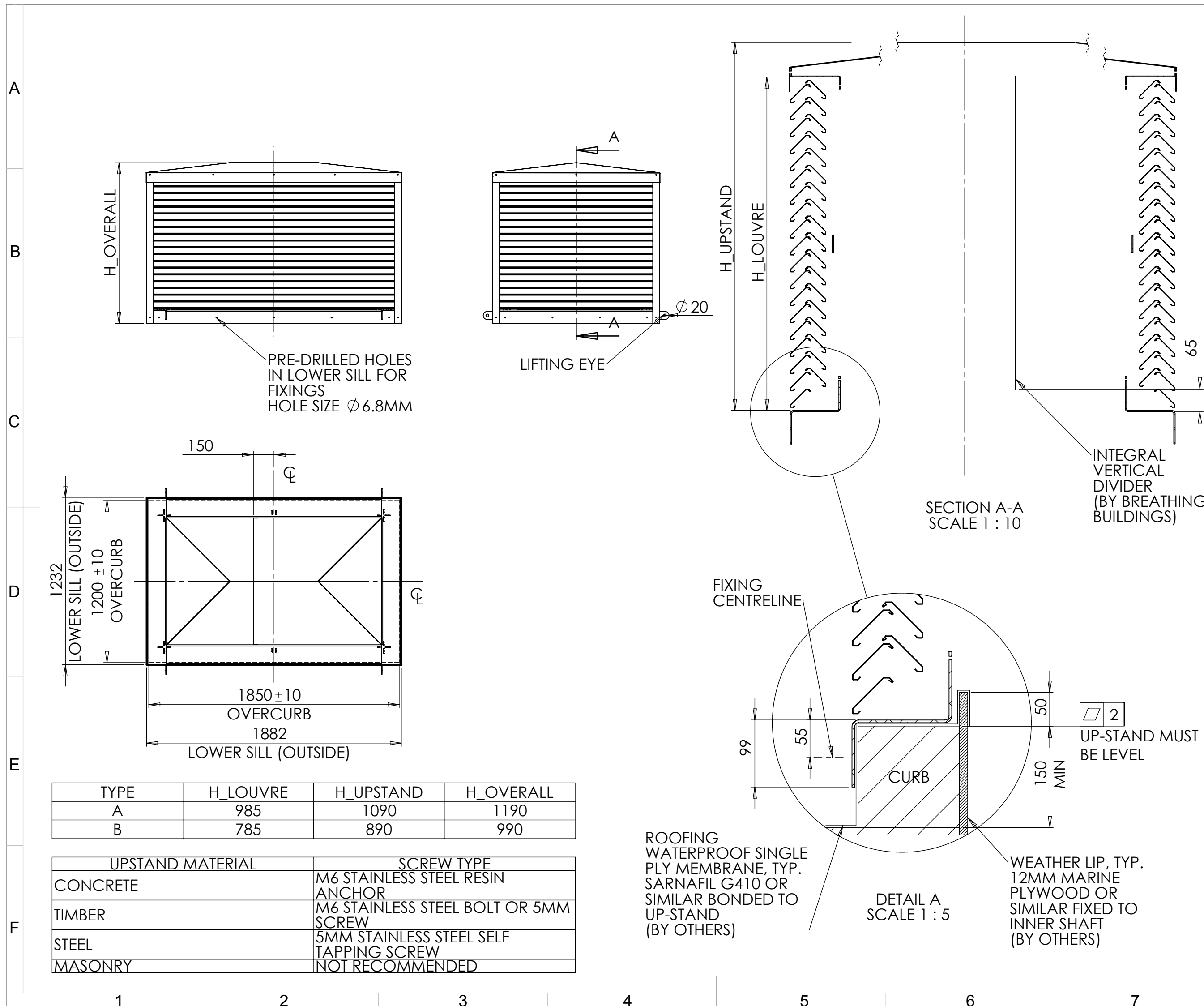
R-SERIES PENTHOUSE LOUVRE  
ROOF TERMINAL (BBL)

DRAWING NO.:

1305\_9010

REV	DRAWN	DATE	CHK'D	DATE
6	CC	22/08/2016		

SCALE 1:25 A3 SHEET 1 OF 1



TYPE	H_LOUVRE	H_UPSTAND	H_OVERALL
A	985	1090	1190
B	785	890	990

UPSTAND MATERIAL	SCREW TYPE
CONCRETE	M6 STAINLESS STEEL RESIN ANCHOR
TIMBER	M6 STAINLESS STEEL BOLT OR 5MM SCREW
STEEL	5MM STAINLESS STEEL SELF TAPPING SCREW
MASONRY	NOT RECOMMENDED

ROOFING WATERPROOF SINGLE PLY MEMBRANE, TYP. SARNAFIL G410 OR SIMILAR BONDED TO UP-STAND (BY OTHERS)

WEATHER LIP, TYP. 12MM MARINE PLYWOOD OR SIMILAR FIXED TO INNER SHAFT (BY OTHERS)